

GOLDRUSH LEDGER



Charlotte Gem & Mineral Club

March 2008

The Prez sez ...

This is my first president's message since January and a lot has happened since then. Ron Gibbs could not do a Feb. edition of our newsletter as he was on a six-week trip to Tucson and Quartzite. I saw a few of the slabs and stones that Ron purchased while there. WOW! Ron has agreed to give a program in the near future on some of the new agate and jasper finds that he saw.

We had no monthly meeting in January due to snow, but we did have our first field trip in a long time to Porter, NC to collect Limonite crystals. It was a very cold day and despite a bit of a mix up in directions, all found the site. We had new members at the dig as well as some old timers. Despite the cold, approximately twelve of us had a good day sharing the joy of digging rocks.

Mary Fisher was there with her son and his friend and I have not seen such enthusiastic diggers in a long time! I want to thank Mary for her generous donation of \$250.00 towards equipment for our clubhouse. I think that we will name the saw: Mary. But, then we would have to name the sink, Sara, and

the toilet, Murray and Linda, the lights for the hall, Wayne and the lights in the shop, Ron.

The fine tuning for the shop is not finished, but Karen is organizing a team to tackle the job this Saturday, March 1st. I have more exciting news on donations. Kathy and I have a friend that lives about 75 miles north who is a rock person to the core. She recently was told about some estate items. It seems that a life long rock guy that loved cutting stones was near the end of his life.

He told his caregiver to take all of his stones and equipment as he knew that his family would toss everything in the dumpster. He told the caregiver that he wished the items would someday be appreciated by someone. Well, our friend got the lot and as I was inspecting the old stones with her, I asked her what she planned to do with the equipment as she already had everything that she needed to cut stones. She asked me about selling the items on EBAY for her. I then asked if she would consider donating the items to our clubhouse.

Our club is now the proud owner of a Hi-Tech All-In-One variable speed flat lap and a variable speed opal/facet saw! If we purchased

these new, we would be looking at about \$800.00 folks. I can only hope that that old rock guy will be looking down at our members using his precious equipment.

Now, let's talk about field trips. It is my goal to have one every month of the year that is feasible. One easy way is to join up with the Dixie Mineral Council joint field trip. There is a joint trip in March to the Woodleaf Quarry that is nearby.

I have never been to this location and Jimmy Strickland tells me that

continued on Page 2

Table of Contents

1. Presidents Message
2. March Meeting info
3. March Field Trip info
3. Stamp Program
4. - 5. Agates part IV cont'
6. April Field Trip - Graves Mtn.
7. Junior Rockhounds
(New Information !)



2008 CGMC Officers & Board

President

Jack King
tackyjackie@bellsouth.net

Vice President

Murray Simon
drsimon@mindspring.com

Secretary

Pat Walker
704/523-5261

Treasurer

Gale Blevins
Blevins.family@mindspring.com

Directors at Large

Mario Caceres
mariojessicajulia@yahoo.com

Tom Shope
tomshope@yahoo.com

Bulletin Editor

Ron Gibbs
theimage1@aol.com

Past President

Jimmy Strickland
704/537-6010

CLUB CHAIRPERSONS

SFMS Contact

Ken Anderson
27K.DA66@RJSONLINE.NET

Stamp Chair

Pat Walker

Geode Chair

Jimmy Strickland

Membership & Points Chair

Linda Simon
lsimon1@carolina.rr.com

Hospitality Chair

Karen Krammer
kjkammer@charter.net

Workshop Chair open

WebMaster

Ron Gibbs

Librarian

Pat Walker

Christmas Party Chair

Pat Walker

he has not been there in ten years, so who knows what treasures we might find. Ron will post a separate link with map. As for April, there is a joint trip to Graves Mtn. Ga. Which is a weekend long trip with rock swap, food on the mountain and all around good times. I have been to this famous location and MUCH is to be found. Rutile, kyanite, hematite, lazulite and a host of other minerals. I suggest going to this location and getting a motel room or camping and making a weekend of it. I plan to go and hope to see you there. Kids will love this place as everyone finds something good. Again, Ron will post a separate link with information about this trip.

If you missed our Feb. meeting, you missed one of the most fantastic programs that I can recall seeing and hearing. Dr. Bill Logan gave a program on Rhodochrosite with some of the best mineral photography that I have seen and before that night, I had no idea as to how many forms of Rhodochrosite there were. Thanks! Bill.

We still need suggestions for a meeting place. I have talked to one church and will continue discussions. We have also had discussions about moving our monthly meeting to a Saturday in order to attract more members with children who just cannot get out on a school night. We have not decided yet but this brings me to another EXCITING announcement!

Mary Fisher has volunteered to start up a junior rock hound program again. As the groups will be small, we will hold these meetings

in our clubhouse the last Saturday of each month. Mary has all the program materials ready and we will reach out both to our own member families as well as scouting organizations to recruit our charter new youth group. This is SO very exciting to me as the future of our club lies with the youth that will carry our club forward for the next 50 years.

I look forward to hearing from you with your ideas and suggestions as to how to make our club the best in the southeast. - Jack King




March Meeting

The March meeting will feature Kim Tyler demonstrating the art of Stained Glass creation. She will have examples of her work and will demonstrate, and answer questions about the process.

When: March 20th
Time: 7:00 pm
Where: Discovery Place

The April meeting will be a computer slide show of my visit to Quartzsite and Tucson in 2008.

Photos of the shows, specimens, and other happenings. I will also bring in some of my purchases to pass around. A 9,000 mile driving trip by Ron Gibbs.



Additional information can sometimes be found at the club WEB site:

[http:// www.charlottegem.com](http://www.charlottegem.com)

March Field Trip News

Date: March 22, 2008,

Time: 8:00am to noon

Site: Martin-Marietta Quarry in Woodleaf, NC

There will be a MANDATORY SAFETY meeting before entry to the quarry. Safety glasses, hard hats, and hard shoes are required for entry. (***NO tennis shoes or sandals allowed!***) There have been problems at several Martin-Marietta sites and some have been closed to collectors due to those problems. **STAY AWAY FROM WALLS OR BE PREPARED TO BE ASKED TO LEAVE!** Any violations of safety policies will result in exclusion from future digs, There have been excellent specimens collected at this location and we hope to find more of the good stuff this trip.

MINERALS: Calcite, Chabazite, Chalcopyrite, Epidote, Feldspar, Fluorite, Hornblende, Molybdenite, Natrolite, Prehnite, Pyrite, Quartz and many micro-minerals still to be listed.

I-85 N toward CONCORD / CONCORD.

Merge onto I-77 N via EXIT 38 toward COLUMBIA. 20.1 miles

Take the US-21 N exit- EXIT 33- toward LAKE NORMAN. 0.1 miles

Turn RIGHT onto US-21. 2.6 miles

Take the NC-150 ramp. 0.1 miles

Turn RIGHT onto NC-150. 3.0 miles

Turn LEFT onto NC-801. 11.0 miles

Turn LEFT to stay on NC-801. 1.8 miles

Turn RIGHT onto STATESVILLE BLVD / US-70 / NC-801. 1.4 miles

Turn LEFT onto NC-801. 3.6 miles

Turn LEFT onto WOODLEAF BARBER RD / WOODLEAF-BARBER RD.



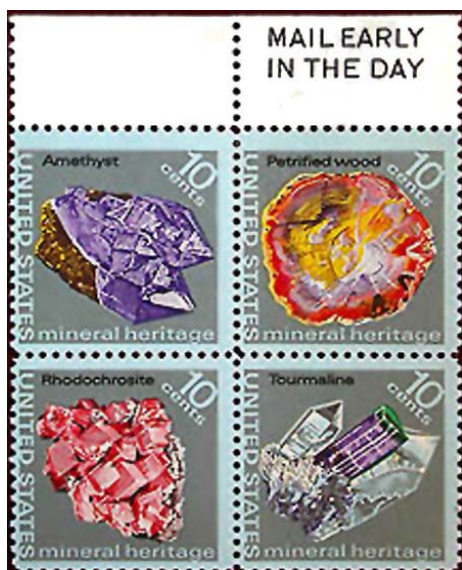
Pat Walker will be turning in the stamps after the next meeting. Turn your stamps in please!

SFMS Stamp Program

Our club is a participating member in the SFMS cancelled-stamp program. Our members are asked to save stamps from their mail by cutting around the stamp, leaving 1/4" so as not to damage the edges of the stamp. The stamps can be soaked off of envelopes, and our club will receive twice as many credits for stamps delivered in this condition than it will for those still stuck on the paper. Please check the SFMS website at

<http://www.amfed.org/sfms/stamp-program.html>

for specific information and instructions for the stamp program. Members are also asked to collect the white labels printed by the USPS (showing the cost of mailing and the origination and destination zip codes). Members may turn in their collections at regular meetings, being sure to include a piece of paper with their names. A drawing will be held in September to provide at least one name for inclusion in the Federation's annual scholarship drawing.



Agates - some classification Part IV

by ron gibbs (www.theimage.com)

Thus far we have looked at fortification agates, plume agates, dendritic agates, moss agates, sagenitic agates, and tubular agates. So what's left?

Well, everything else! And there are lots and lots of "elses" out there. In many cases agates may have "mixed" parentage, meaning they may show more than "one type" in a single rock. There are often patches of moss running through the edges of fortification agate, or small fortifications in sagenitic agate. But let's forget the mixed ones for now and look at a few of those that are not quite in any of the previous categories.

Many times agate may be formed around another material, in the case of one called "Nipomo Marcasite", the agate formed around crystalline masses of the iron sulfide, marcasite. The name comes from the locality, Nipomo, California.

The mineral marcasite has the same chemistry, but a different structure than pyrite. It tends to be less stable once exposed to air, and finely structured crystals often are oxidized away on exposure to air.

The agate in nipomo marcasite acts like a protective layer around the marcasite and preserves it.

Other metallic minerals, hematite

and goethite (and several of their related similar oxides and hydroxy-oxides) can be trapped in a vein of agate and forms the basis for what we call "Fire Agate".

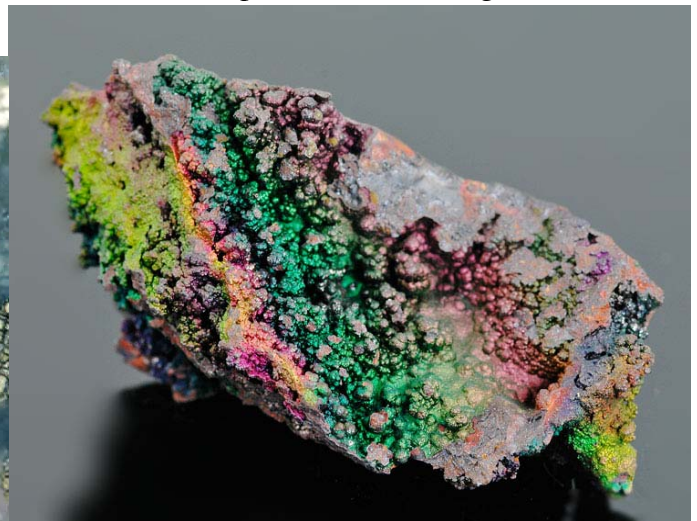
Chalcedony (the basic building block of agate) can form in boytryoidal lumps (grape like structures), followed by an iron-oxide coating, more chalcedony, then more iron-oxide, etc. etc.

If the iron-oxide forms in its "specular structure", it can show a rainbow color-play across its surface. These concentric hemispheres of color are responsible for the "fire" in fire agate.

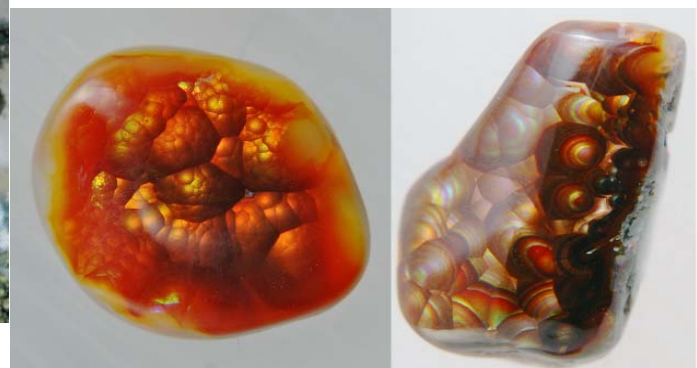
(See images below showing the rainbow hematite and then compare with the fire agate.)



Nipomo Marcasite



Rainbow Hematite



Fire Agates

There are agates with circular inclusions, one of the named ones is polka-dot agate. Another is called Luna Agate that also shows circular structures. One material called Ocean Jasper actually can be either a jasper or an agate or something in between, and will be covered in more detail in the upcoming jasper sections.

There is an agate called Confetti Agate as it appears to have a stream of confetti trapped within its structure. Plasma Agate is from a fault-rich zone in California and appears to have colored streamers and flowing lines running through-

out. Carter Mountain Agate from Wyoming appears to be made up of a honey comb of cellular structures, and the list goes on and on.

For the most part new agates are discovered every year, and some are easily categorized and other not.

They provide a fascinating variety of material for colorful lapidary work.

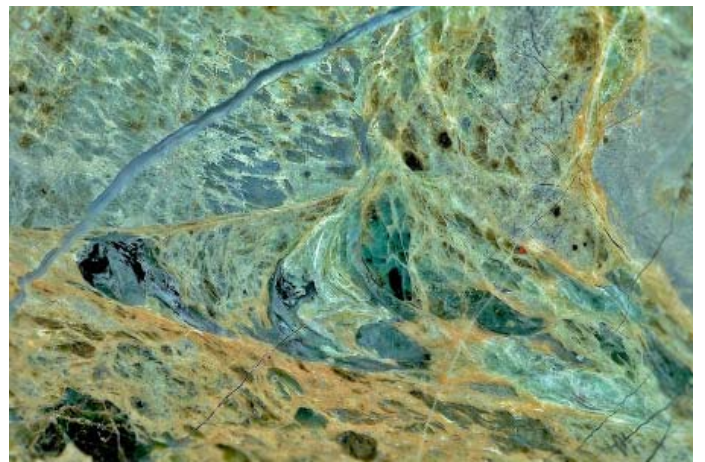
In the next series of articles I will be discussing Jaspers, their formation, types and how they differ from agates.



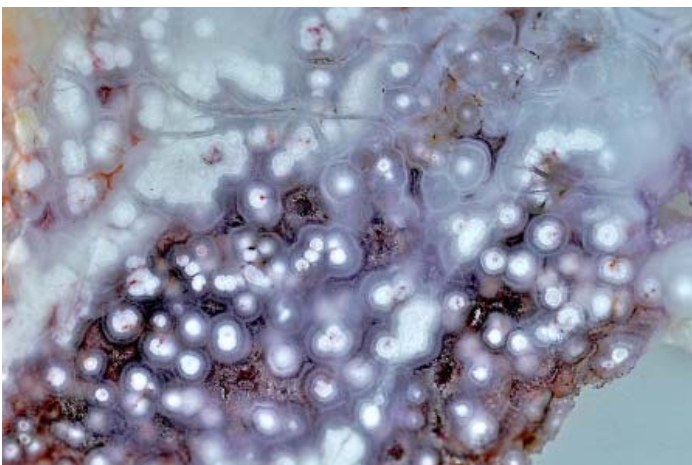
Confetti Agate



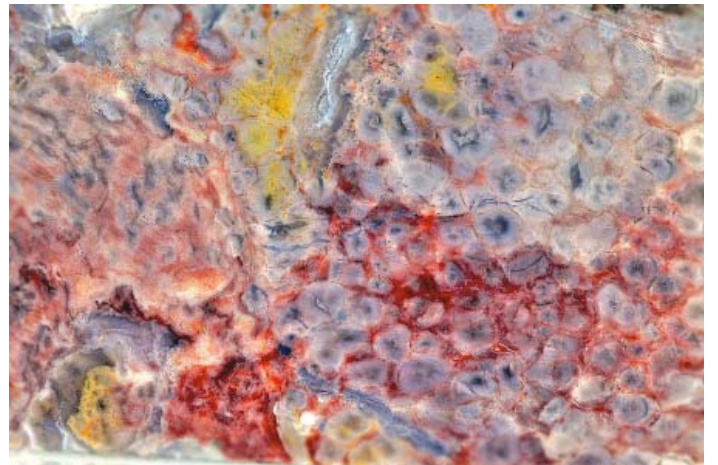
Polka-Dot Agate



Plasma Agate



Luna Agate



Carter Mountain Agate

April Field Trip News

GRAVES MOUNTAIN, GA. “ROCK SWAPS AND DIGS”

Dates:/Times: 8:00 A.M. to 6:00 P.M., Friday, April 25, 2008
8:00 A.M. to 6:00 P.M., Saturday, April 26, 2008
8:00 A.M. to 6:00 P.M., Sunday, April 27, 2008

Your society is invited to field collect minerals at Georgia’s premiere mineral location!

The caretaker in charge of Graves Mountain, Clarence Norman Jr., in regard to his plans to hold TWO three-day digs and rock swaps on the Mountain during April 25–27, 2008 and October 3-5, 2008. He will have the mountain open to collecting from 8:00 A.M. to 6:00 P.M. each day.

All participants must stop at the welcome table in the hospitality tent to sign a liability release and make a small contribution to defray the cost of opening the mountain and providing port-o-lets. There will be several golf cart-type, four wheeled vehicles available to transport those participants who have trouble walking long distances. The dig will cease and everyone is expected to be off the mountain by around 6:00 P.M. each day.

Participants will be allowed to park in a designated area on the mountain. Rock Swap and Hot Food/Drinks: Junior will set aside an area in the upper parking lot for tables to be setup for daily rock swaps. Anyone who would like to setup a table(s), please contact Junior at the phone numbers listed below. Hot food cooked on the grill, cold drinks and chips will be available for purchase on the mountain during all three days of these events.

Don’t forget to bring some extra money to buy the special “Graves Mountain Rock Swap and Dig” T-shirt! THESE DIGS ARE OPEN TO ALL. Mark your calendar and tell all your members about these great events!

Contact Information: Clarence Norman Jr. - 706.359.3862 (his business) or 706.359.2381 (his home)



GRAVES MOUNTAIN CODE OF CONDUCT!

- | | |
|---|--|
| <ul style="list-style-type: none">• Park your vehicle in the designated area(s) only.• NO child under the age of 12 years old is to be allowed on the mountain because of the dangers involved.• ALL pets must be kept under control and on a leash.• The field trip leaders have final and absolute say as to where you may safely work.• Ladders or power tools of any kind will not be allowed. (HAND TOOLS ONLY!)• STAY AWAY FROM ALL HIGH WALLS!! | <ul style="list-style-type: none">• NO RAPELLING OFF OF ANYTHING!• NO ONE IS ALLOWED TO DRIVE THEIR VEHICLE ON ANY PART OF GRAVES MOUNTAIN BEYOND THE PARKING AREA! (The caretaker must accompany anyone driving beyond the parking area!)• EVERYONE NEEDS TO BE OFF THE MOUNTAIN BY DUSK. (Absolutely no one is allowed on Graves Mountain after dark.) <p>Please protect our ability to field collect at Graves Mountain!</p> |
|---|--|

Something new is in the air ... for our Junior Rockhounds

by Mary Fisher

Join the Charlotte Junior Rockhounds! Our club is going to sponsor a meeting specifically for the younger members with discussions and activities designed especially for them. The meetings will be on the last Saturday of every month from 10:00-11:00 a.m, and located at the new CGAM Clubhouse. (Above Camera World (A) at 1809 Commonwealth Ave, Charlotte, NC 28205.)

Meeting Format:

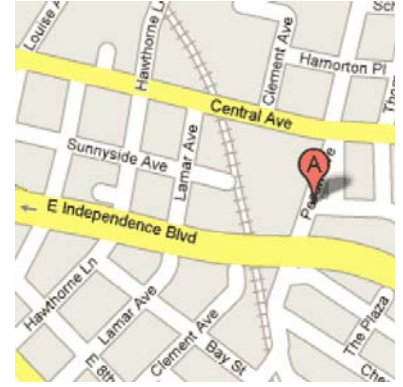
1) Show & Tell!

- Bring your own interesting Rock or Mineral to show the group!

2) Learn Something New!

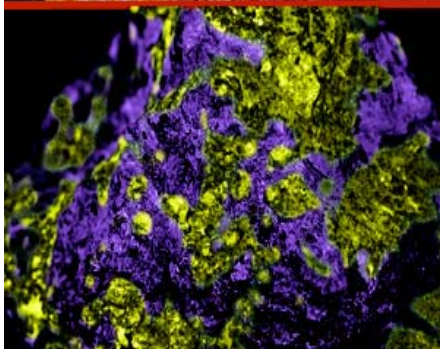
This year we will cover topics such as:

- ◇ Fluorescent Minerals
- ◇ Types of Rock (Igneous / Metamorphic / Sedimentary)
- ◇ N.C. Gold
- ◇ Fossils
- ◇ Gems and Minerals of North Carolina
- ◇ Crystals
- ◇ Mineral Identification Night



Meetings consist of a short talk about today's topic, then a hands-on activity. Parents are encouraged to attend with students. There are no fees, but families must be members of the Charlotte Gem & Mineral Club. In order for me to prepare the right materials, you must sign up ahead of time.

If you have questions or want to sign up, contact Mary Fisher via email at mefisher@att.net, or by phone at 704-786-6621.



**Willemite, Fluorapatite,
Andradite - N.J.
Long Wave UV**

First Meeting Notification Charlotte Junior Rockhounds!

Saturday, March 29
10:00 AM – 11:00 AM
CGAM Clubhouse

Show & Tell
Bring a favorite Gem or Mineral
to show the group!

Topic for March:
Fluorescent Minerals
(Minerals that glow, or emit light
under different types of lighting)

Meetings are limited to 12 students.
Parents are encouraged to attend with students.

In order for materials to be ready, you must sign up ahead of time:
If you have questions or want to sign up,
contact Mary Fisher at mefisher@att.net, 704-786-6621.



Bulletin Editor ron gibbs
theimage1@aol.com

The Goldrush Ledger is published monthly in Charlotte, North Carolina. Articles may be reproduced provided proper credit is given to the author and to this publication. Deadline for publication is the 8th of each month. Material may be submitted at club or executive board meetings, or mailed directly to the Editor, and will be in the next issue if still timely. All articles must be signed and, where applicable, references must be provided. The Charlotte Gem & Mineral Club is a member of the Southeast Federation of Mineralogical Societies, an affiliate member of the American Federation of Mineralogical Societies, and an affiliate of the Arts & Science Council of Charlotte, North Carolina. Annual dues of \$25.00 (family) and \$20.00 (individual) are payable in December for the following year. The purpose of this Club is to foster interest in, and promote knowledge of, minerals, gems, fossils, and all earth sciences. We also disseminate information and instruction in the lapidary arts and the utilization of precious metals in our crafts. These purposes are accomplished through regular meetings (usually the third Thursday of each month at 7:0pm, at Discovery Place, 301 N. Tryon Street, Charlotte) with informative programs, study groups, workshops and field trips. Visitors are most welcome to our club meetings. For more information, write our club at: P.O. Box 10233, Charlotte, NC 28212- 5667. [http:// www.charlottegem.com](http://www.charlottegem.com)

Local Shows

March 9 - 11 Aiken-Augusta 19th Annual Gem, Mineral and Fossil Show Julian Smith Casino - 2200 Broad St. - Augusta, GA Admission \$3 Adults / children under 16 free with an adult. Exhibits - Demonstrations - Educational Resources .. 50-cent Grab Bags, hourly Door Prizes, Kid's Treasure Dig, Geode Cracking, Low prices on gold, silver, jewelry, gems, lapidary supplies, mineral specimens, crystals, rough, cabochons, fossils, beads, chains, wire-wrapped jewelry Email contact: wkkw@bellsouth.net <http://www.homestead.com/aikengms>

March 16 - 18 30th Annual Valley and Ridge Gem and Mineral Show Presented by the Rome Georgia Mineral Society on Friday-Sunday March 16-18, 2007. Fri-Sat 10-6, Sun 1-5. Chapel Hill United Methodist Church, Rome GA - Directions: From the Rome Bypass (GA Loop 1), turn East on to Kingston Rd. (Hwy 293), drive a few hundred yards and turn right into the show at Chapel Hill United Methodist Church. The mineral show will be in the gym past the parking lot. For Show Information: Tim Biggart, Show Chair 706.232. 7143 * tbiggart@berry.edu For Dealer Information: Bob Madden, Dealer Chair 706.295.3912 * 706.295.7320 * rjmcanoe@aol.com

Charlotte Gem & Mineral Club
PO Box 10233
Charlotte, NC 28212-5667