

# GOLDRUSH LEDGER



**Charlotte Gem & Mineral Club**  
**November 2008**

## *The Prez Sez ...*

It gives me great pleasure to tell you of an historical time for the Charlotte Gem and Mineral Club. On Saturday, Nov. 1st and Sunday, Nov. 2nd., we held our first three classes in our new clubhouse which is located atop Camera World, 1809 Commonwealth Ave. Charlotte.

Beginning cabochon cutting and polishing were the first classes and we had full classes of eager members wanting to learn the process. After a short DVD presentation, attendees chose their slabs to mark and then trimmed the excess material, ready to make their first calibrated cabochon.

At later classes, members can advance to freeform shapes at their discretion. Stones were soon dopped with wax and put on dop sticks ready to begin the sequence of grinding, sanding and polishing a beautiful gemstone.

Our next classes will be in December at dates to be announced soon. Linda Simon's wire class is totally full and Murray Simon will teach another cabochon class on Nov. 15th due to the tremendous demand. For me, it is very rewarding

and gratifying to see our clubhouse come together due to the hard work and spirit of volunteerism of so many members as well as the tremendous contributions to help with purchasing equipment, furnishing lights and utility sink.

We have had donations of like new tables for our craft work. Our club had been promised stacking chairs from a closed restaurant, but I was told that the demolition team tossed them into the dumpster before we could retrieve them. I learned later that the workers sold them for the scrap metal. As a result, our club had to buy stacking chairs.

We still could use some help with needed items and if anyone would like to add our club to your donations budget, it would be greatly appreciated, and as a non profit, not only is your gift tax deductible but you will be helping our community where not only can you see the results helping others but YOU can enjoy the clubhouse too.

Right now, we need a battery powered wall clock as well as dop pot and we are going to need to replace several wheels on the two

older Genie machines. I can get the dop pot and wheels at dealer cost but the little things to get this room operational are adding up on the bills that I have turned in to our treasurer, Gale.

Things like oil for the saw and templates and other shop supplies like aprons and visors are adding to our expenses. We are charging a very modest class fee in the cabochon class of six dollars each per session which barely puts a dent in

### **Table of Contents**

- 1. - 2. Prez sez**
- 2. - Proposed 2009 Officers**
- 3. - Jr. Rock Hound Info**
- 3. - Club Points Due**
- 4. - 5. Rhyolites - Jaspers?**
- 6. - 7. Club House Opens!  
First Class Begins**
- 8. - Upcoming Events**



# 2008 CGMC Officers & Board

## President

Jack King  
tackyjackie@bellsouth.net

## Vice President

Murray Simon  
drsimon@mindspring.com

## Secretary

Pat Walker  
704/523-5261

## Treasurer

Gale Blevins  
Blevins.family@mindspring.com

## Directors at Large

Mario Caceres  
mariojessicajulia@yahoo.com

Linda Simon  
lsimon1@carolina.rr.com

## Bulletin Editor

Ron Gibbs  
theimage1@aol.com

## Past President

Jimmy Strickland  
704/537-6010

## CLUB CHAIRPERSONS

### SFMS Contact

Ken Anderson  
27K.DA66@RJSONLINE.NET

### Stamp Chair

Pat Walker

### Geode Chair

Jimmy Strickland

### Membership & Points Chair

Linda Simon  
lsimon1@carolina.rr.com

### Hospitality Chair

Karen Krammer  
kjkammer@charter.net

### Workshop Chair open

### WebMaster

Ron Gibbs

### Librarian

Pat Walker

### Christmas Party Chair

Pat Walker

our expenses but it sure helps. We have also purchased a selection of cabochons for our wire wrappers to have stones at hand for their convenience which they will buy at very reasonable prices.

In addition, and a MOST important and vital opportunity for our clubhouse is our junior rockhound program which is run by Mary Fisher. This group is adding members and that is very exciting.

We purchased some cabochons for this group and we will involve them in the process of actually cutting and polishing a stone at their December meeting. It would be very difficult for each kid to finish his own stone from start to finish, so we will let them put the final polish on the pre made stones we have for them, glue a bail on them and have them a gift to take home to their moms.

Will YOU find a way to help our clubhouse financially in our efforts to reach out to old and new members and the youth of our community? Any gift will be much appreciated by all.

Our November meeting is our annual club auction. Bring just about anything that you think will sell from extra rocks, minerals, slabs, finished jewelry and crafts and oh, yes, GALE, your baked goods would be YUMMY. I look forward to seeing you at the auction. Bring stuff to donate and bring money and let's have some fun!

*Jack King, President,  
Charlotte Gem and Mineral Club.*

## *Slate of Nominations for Club Officers in 2009*

The following slate of officers for the 2009 Charlotte Gem & Mineral Club have been proposed by the nominating committee. More nominations will be accepted from the floor at our next meeting, so if there is any interest you are free to put your name in the hat for any position.

Elections will take place at the Christmas meeting in December and those elected will begin to serve in January of 2009.

## **Nominations:**

**President: Jack King**

**Vice President: Murray Simon**

**Secretary: Pat Walker**

**Treasurer: Gale Blevins**

**Editor: Ron Gibbs**

**Member at large: Linda Simon**

**Member at large: Ken Anderson**



**Please bring your stamps  
to Pat Walker at the club  
Picnic this month as she  
wants to turn them in  
soon.  
*Thanks!***

**Field Trip: Cotton Patch Gold Mine  
Junior Rockhounds Activity  
Open to all CGAM club members and guests!  
Saturday, November 8, 2008  
10:00 AM until...**

**Group Rates  
(tell them you are with the Charlotte Gem & Mineral Club):**

**Adults: \$10.50, includes 5 two-gallon buckets of gold placer material  
Children under 12: \$6.50, includes 3 two-gallon buckets of material  
Gem Buckets: \$10 each, or 2 for \$18.50  
Pans are provided**

**We will be still-water panning in open troughs – hats & sunscreen recommended.**

**It is likely to be cold, so bring a change of clothes in case you get wet!**

**Drinks, snacks and bathrooms are available at the mine store.**

**Picnic tables are available – bring your own lunch!**

**Mine is open from 9:00 AM to 5:00 PM**

**Cotton Patch Gold Mine  
41697 Gurley Road  
New London NC**

*The December Board Meeting will be at Pat Walkers house rather than the club house. It will be on Tuesday, December 2nd at 7:00 pm.*

### ***Last Local Show Before holidays***

November 28-30, 2008,  
Columbia, SC -

Columbia, SC Gem & Mineral Society. 41st Annual Gem, Mineral, and Jewelry Show 2008. South Carolina State Museum, 301 Gervais St.

Hours: Not Provided - call contact. Contacts: Sharon Sterrett at 803.356.1472 or ssterrett@sc.rr.com or Susan Shrader at 803.736.9317 or ashdrader@mind-spring.com.

## ***Club points need to be turned in at November meeting.***

Each year our club sponsors a number of scholarships to either William Holland or Wild Acres lapidary schools.

See the August and September issues of the club news letters for a description of the William Holland School. The Wild Acres Retreat is a similar one week school sponsored by the Southeastern Federation of Mineralogical Societies. It happens two times a year, and in each of those weeks there are a variety of classes offered in lapidary and metal working disciplines.

Our club awards points for service to the club. The point sheet can be

downloaded from our WEB site.

Points are awarded for attending a meeting, working at club events, writing articles for the newsletter, presenting a meeting, teaching a class, providing refreshments, and many many other things.

There are two categories for the scholarship, those that have been with the club for less than two years, and those who have been members for longer.

Once the sheets are collected and verified. They will be divided into the two categories, and then a name from each will be drawn at random

to determine the winners. Each category will also have an alternate drawn in case the winner cannot attend.

Scholarship winners for the past two years and not eligible this year.

The winners will then be able to choose a one week class at either William Holland or Wild Acres, and the class will be funded by the Charlotte Gem & Mineral Club.

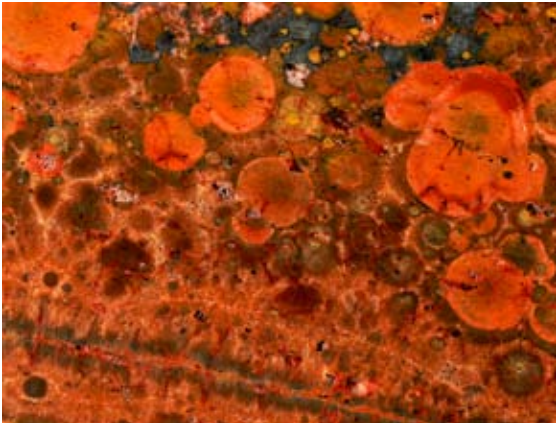
So get those point sheets turned in at the November meeting to get qualified for the drawing. Turn in sheets to Linda Simon sometime in November.

# Rhyolites - Wanna-be Jaspers?

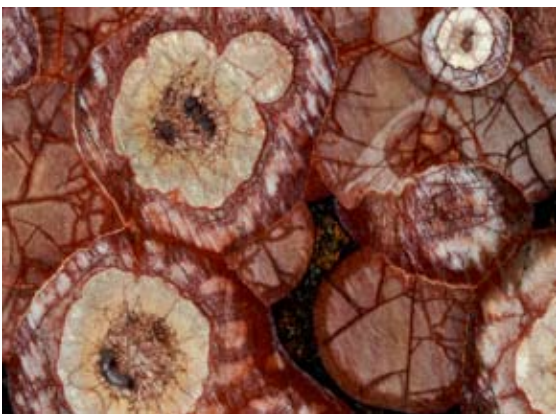
by ron gibbs



*mushroom jasper*



*Mexican poppy jasper*



*bird's eye rhyolite*



*lily pad jasper*

So what is rhyolite? Rhyolite is a type of igneous magma with about a 70% silica content. Rhyolites and Andesites are two of the most explosive magmas, and typically don't flow well like basalts. They have high water content and often form ash flows or pyroclastic clouds. Interestingly enough the chemical content of rhyolite is the same as the volcanic glass, obsidian. Obsidian is formed when a rhyolite magma cools very quickly.

When rhyolite cools at a slower rate it forms porous materials often with pockets. Since it has a very high silica content there is a high percentage of crystallized silica (somewhere between that of cryptocrystalline quartz (chalcedony) and macro crystalline quartz.) Many times the void spaces are filled in with later solution silica similar to agate or jasper formations. Unlike jasper, they are not made up of cemented sediment, they form from high temperature crystallization.

The material sold as mushroom jasper, from Arizona, shows large crystal growth in the open void spaces like a rhyolite. The mushroom shapes show hemispherical crystal growth with larger quartz crystals at many centers. This material cooled from a melt.

Lily Pad Jasper and Rain Forest Jasper are green colored rhyolites with patchy areas filled in by secondary materials in the void spaces. Rain Forest Jasper shows small agate pockets growing in most of the open chambers. These tiny agates even show fortification patterns with standard chalcedony growth.



*Mexican poppy jasper*

Another similar material is rhyolite with opal where the pockets are filled with opal rather than chalcedony. This had to be filled much later after the rhyolite cooled.

Thunder eggs are a standard rhyolite structure that are often filled with agate. Butterfly Jasper, is actually a thunder egg where the colors and structures of the surrounding rhyolite are more pleasing than the egg filling.

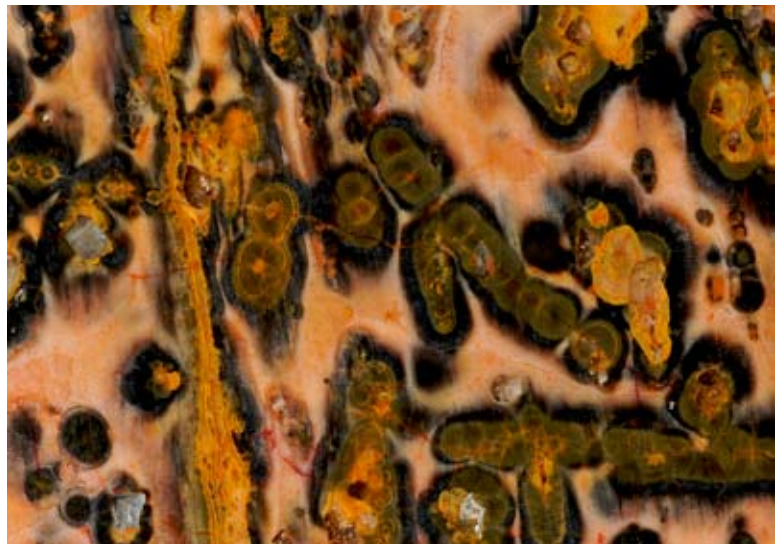
Leopardskin Jasper is another rhyolite with small circular structures filled by radiating crystals. Leopardskin, Butterfly, Mushroom, Lily Pad, and Rain Forest are all sold as jaspers, but they are all rhyolites and not true jaspers.

In general one of the definitions of jasper is a nontransparent variety of cryptocrystalline quartz. Thus many materials that are not transparent and do not fit the definition for agate, end up being called jasper. Another major difference between jaspers and rhyolites are their bulk structure. Rhyolites show separate mineralization and crystal structure throughout the mass. Jaspers are fundamentally just a cemented sediment with microscopic grain patterns.

And thus ends about 12 months of discussion on agates and jaspers as lapidary materials. So what's next? Hummm ..... maybe ....



*butterfly jasper*



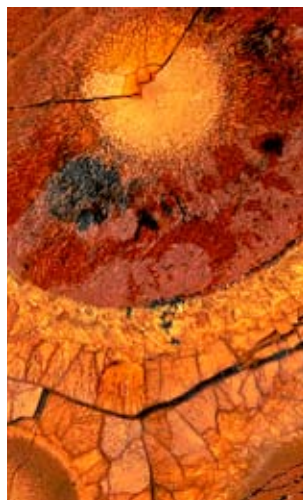
*leopardskin jasper*



*rain forest jasper*



*rhyolite with opal*



*rhyolite*

## *Rock & Gem Club House “Open for Business”*

I am happy to report that we held our first historic classes this weekend in the Charlotte Gem and Mineral club’s new club house.

We had two back to back cabochon classes on Saturday and due to demand, I held a third one on Sunday morning.

As you may know, we have been fortunate in getting many donations to make this room possible. Murray Simon got us some like new tables, we had our utility sink paid for by Sara Boyce and hooked up by members, Mary Fisher paid for a new trim saw, Robyn Vernon donated a High Tech diamond flat lap polishing machine, Ron Gibbs gave us lights and many members did necessary wiring to make the room safe.

We have a TV set and DVD player that the club already owned and I used it to show videos on cabochon cutting. This was a weekend of sharing what we do and it was most rewarding to me personally to teach these classes.

Students pay a very modest class fee for each session to defer some of the costs of supplies that will continue to occur. Right now, I am making a call for some more help in the form of additional items needed.

First, it would be nice to have a small wall clock. Used would be fine.



*Inaugural Cabochon Class*

---

Next, if someone saw it in their heart to have the dop pot named after them and has a used one or would donate the cost of a new one which is about \$40.00 it would be greatly appreciated.

I purchased six shop aprons for \$30.00 and four visors for about \$25.00. I still have a very nice set of donated lockers sitting downstairs waiting for volunteers to carry it up the steps. I took it to a welder and had a third of it cut off with a torch so it should be easier to get into the space now.

Linda Simon's first wire class is next weekend and is packed to beyond capacity. If you want to help our club a bit more, it would be greatly appreciated by all.

Thank you,  
*Jack King, President,*  
*Charlotte Gem and Mineral Club.*



## *Upcoming Events*

### **November Meeting - Annual Auction**

*Discovery Place  
November 20, 2009  
7:00 pm*

Once a year the club holds its auction of lapidary materials, minerals, specimens, jewelry, and hobby related items. Please bring in those extra slabs, cabs, or do-dads for a fun evening of fund raising for your club. The donated materials are auctioned off and the proceeds are used to buy or repair equipment for the club house, and help fund the internal point-based scholarship program.

### *Mark Your Calendars!*

#### **Charlotte Gem & Mineral Club Holiday Party**

**Friday, December 12th, 2008**

**7:00 pm**

**Amity Presbyterian Church**

**2831 N Sharon Amity Rd**

**Charlotte, NC 28205**

The club will provide the meat dishes, paper products, and drinks, but we ask the members to bring a vegetable, dessert, or salad dish to pass. The club would appreciate a few volunteers to help in the afternoon before the party to aid in setting up chairs and tables. The process usually takes about an hour. A sign-up list will be at the November meeting. If you bring an optional wrapped gift you can exchange it with another one on the gift table. These gifts are usually small craft and club related.

### ***So what's next?***

November 8th - Saturday - Cotton Patch Gold Mine - Jr. Rock Hounds - Mary Fisher - 10:00 am

November 20th - Thursday - Discover Place - Regular Meeting (Annual Auction) - 7:00 pm

December 2nd - Tuesday - Pat Walker's House - Board Meeting - 7:00 pm

December 6th - Saturday - Club House - Cabochons Class - Jack King - 9:00 - 12:00 pm

December 6th - Saturday - Club House - Jr. Rock Hounds - Mary Fisher - 1:00 - 5:00 pm

December 12th - Friday - Amity Church - Annual Holiday Party - 7:00 pm

December 13th - Saturday - Club House - Wire Wrapping - Linda Simon - 9:30 - 1:00 pm

December 13th - Saturday - Club House - Cabochons - Murray Simon - 2:00 - 5:00 pm